



Contact Us:

5589 Marquesas Circle, #201
Sarasota, FL 34233

Telephone: 941-922-3866

Fax: 941-922-1581

Email: info@palmerranch.net

Website: www.PalmerRanch.net

On the Ranch Newsletter April 2025

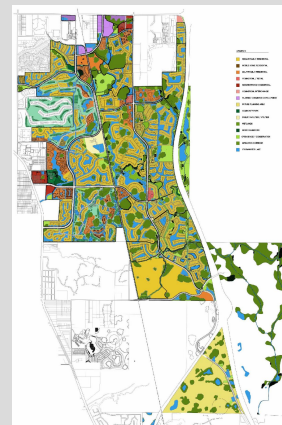
INSIDE THIS ISSUE

- All About Palmer Ranch
- Palmer Ranch Area Map
- News You Can Use
- Sue's Grounds Corner
- Images from Palmer Ranch
- Local Happenings



Click [Here](#) to read all about Palmer Ranch.

Click [Here](#) for a Palmer Ranch Community Map.



Communication from the Master Association to our Members

Why Do Members Have to Pay an Annual Assessment to Palmer Ranch Master Association?

Beautification ...More than two-thirds of the nominal \$175 annual Master Association assessment goes towards upkeep and ongoing beautification of Palmer Ranch; for example:

- 16 miles of grassy rights-of-way, trimmed on a schedule
- 6 entry features (community signs, flagpole, lush landscape & lighting)
- 24 way-finding signs, each beautifully landscaped
- 15 tons of winter rye seed and 6,000 bags of much spread annually
- 1,240 Cabbage Palms trimmed throughout the ranch, on an annual basis
- 180+ Crape Myrtle Trees trimmed and shaped each winter
- 3,500 annuals at 6 entrances and 24 directional signs, changed out at least 4 times a year
- 15 park benches throughout the property, providing for pleasant places for pedestrians to rest

Substantial funds are budgeted each year, for further beautifications

Your master-planned community is widely recognized as a model of contemporary planning. It has earned an impeccable reputation and has become a strong brand. Your assessments allow it to remain a leader in beautification!



What happens to the water in our ponds?

Most of it flows into Little Sarasota Bay and, eventually, the Gulf of Mexico.



All of Palmer Ranch's lakes and ponds are a part of a connected, man-made stormwater management system that is designed to help prevent flooding and maintain the Bay's water quality.

Most of it evaporates—about 74%. The remainder flows into the Bay. Almost 35% of the water in the Bay is from direct runoff.

Our stormwater runoff flows into two creeks: Catfish Creek, which enters Little Sarasota Bay near Vamo, and South Creek, which flows through Oscar Scherer State Park and empties into the Bay south of Blackburn Bridge. We're part of the Little Sarasota Bay watershed—one of seven watersheds in Sarasota County.

A few facts about our watershed:

- It's 44 square miles, with 36 named lakes and ponds and eight named creeks and canals feeding into Little Sarasota Bay.
- It's home to oysters, manatees, sea turtles, dolphins, many species of fish, waterfowl, hawks, bald eagles, osprey, and much more.
- It has a healthy population of sea grass—nurseries of the ocean that support fish and shellfish and serve as food for manatees and sea turtles.
- Its creeks contain too little dissolved oxygen and too much nitrogen and phosphorous.
- Catfish Creek carries the largest amount of water in our watershed, and almost half the pollution load.
- The two creeks our stormwater ponds drain into—Catfish Creek and South Creek—do not currently meet Florida water quality standards.

From fertilizing to applying pesticides to picking up pet waste (or not), many things we do every day affect our watershed.

To learn more, visit: the Sarasota County Water Atlas at <https://www.sarasota.wateratlas.usf.edu> and enter "Little Sarasota Bay watershed" in the site's search bar.

Written by the Palmer Ranch Watershed / Natural Assets Committee, a group dedicated to maintaining and improving our water, preserves, and common areas.

Image Roseate Spoonbill – Credit: Mark Vance

Notice of Public Hearing

Date: Tuesday, April 8, 2025

Time: 9:00 am, or as soon thereafter as possible

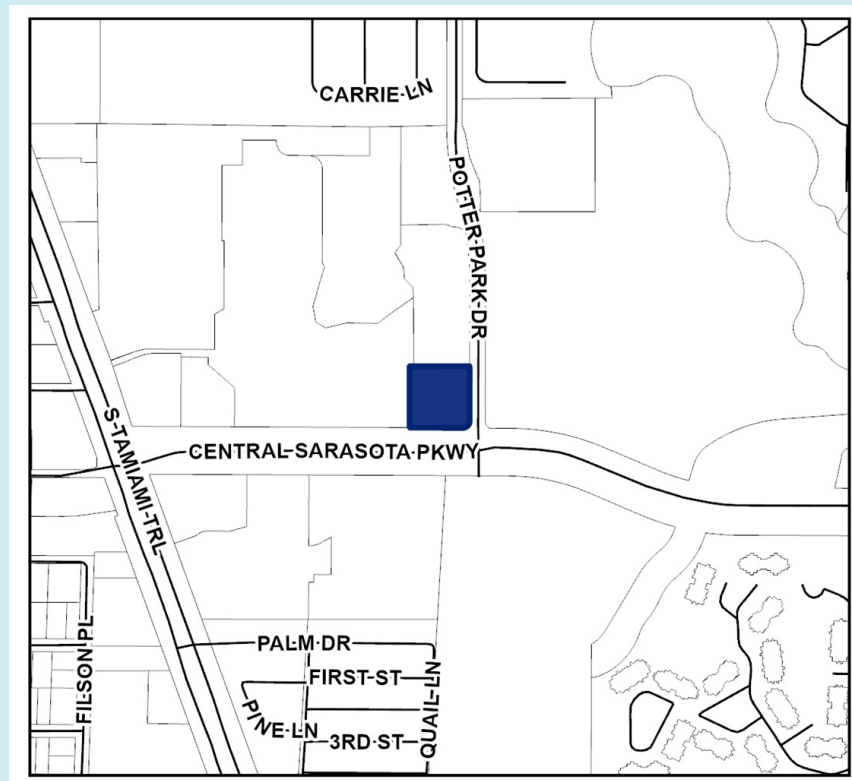
Location: Robert L. Anderson Administration Center, County Commission Chamber, 4000 South Tamiami Trail, Venice, Florida

This project is on Palmer Ranch.

Notice of Public Hearings on a Development of Regional Impact, Notice of Proposed Change, Critical Area Plan Amendment, and Rezone Petition – NOPC-4, CAP 84-02-

Click [Here](#) to read the notice as listed on the Sarasota County website.

1) Critical Area Plan Amendment No. 84-02-SP-2024 to amend Figure 1 Future Land Use Map from Professional Office to General Commercial; **2) Notice of Proposed Change (NOPC) No. 4 to Palmer Ranch DRI Increment V** to change Tract #3 Parcel KK from Office to Office/Commercial and exchange land uses from Office to Commercial; **3) Rezone Petition No. 24-15** from OPI (Office, Professional, and Institutional) to CG (Commercial General), regarding Parcel KK located in Palmer Ranch Increment V. These petitions relate to the property located in the northwest corner of Potter Park Drive and Central Sarasota Parkway, Sarasota, and generally shown on the map below:



Sue's Grounds Corner



ATTENTION: ALL Palmer Ranch CERT Captains

Hurricane Season is quickly approaching. Will all Palmer Ranch CERT Captains please identify yourselves either by emailing Sue Ambrecht at sue@palmerranch.net or by calling us at **941-922-3866**.

We would like to have an updated list of all CERT Captains and where each of you are located. Thank you!

CERT Basic Training Skills Demonstration Course

On **Friday, May 16th** and **Saturday, May 17th**, the SRQ CERT Consortium will host a FREE CERT Basic Training Skills Session at the American Red Cross Building located at 2001 Cantu Court, Sarasota, FL 34232.

These sessions are for those CERT members that have taken the online hybrid part of the CERT Basic Training Course and need the skills session to complete their course and become fully certified.

Announcements from Covenant Life Church

You are invited to Covenant Life Church for their upcoming events!
Covenant Life is located at 8490 McIntosh Road, Sarasota.

- Good Friday Service at **7:00 pm** on **Friday, April 18th**
- Easter Egg Hunt from **10:00-11:30 am** on **Saturday, April 19th**
- Easter Sunday Services at **8:30 & 10:45 am** on **April 20th**



Click [Here](#) or scan the QR code below for more details and to register for the annual Covenant Life Church Easter Egg Hunt.



Glenridge of Palmer Ranch Presentation A Growing Sarasota: Earth Day 2025

The Glenridge of Palmer Ranch Green Team invites you to join them for a complimentary discussion on *Sarasota's Growth from the Environment's Perspective* by Jon Thaxton, Director of Public Policy and Advocacy at the Gulf Coast Community Foundation (GCCF). This event will take place on **Tuesday, April 22nd** (Earth Day) at **10:30 am** at The Glenridge of Palmer Ranch Theatre located at 7333 Scotland Way, Sarasota.



Click [Here](#) to view an article on Jon Thaxton and GCCF from The Glenridge Green Team.

Attendance is free, but non-Glenridge Members are asked to call **941-552-5325** for reservations.

**Palmer Ranch Master
Association**

Hours of Operation

Monday - Thursday: 8:00 am - 5:00 pm

Friday: 8:00 am - 4:30 pm

Would you like to submit an article for
consideration in a future newsletter?

Click **Here** for our article submission
guidelines and form.

Email completed form to:

Info@palmerranch.net



Palmer Ranch Master Association Mission Statement

Our mission is to enhance and maintain the aesthetic quality of Palmer Ranch and to preserve the overall unique identity and sense of community.

Palmer Ranch Master Property Owners Association, Inc. | 5589 Marquesas Cir., Ste. 201
| Sarasota, FL 34233 US