



Contact Us:

5589 Marquesas Circle, #201
Sarasota, FL 34233

Telephone: 941-922-3866

Fax: 941-922-1581

Email: info@palmerranch.net

Website: www.PalmerRanch.net

On the Ranch Newsletter December 2024

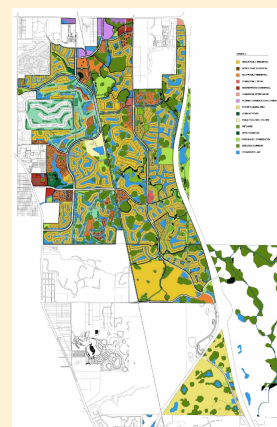
INSIDE THIS ISSUE

- All About Palmer Ranch
- Palmer Ranch Area Map
- News You Can Use
- Sue's Grounds Corner
- Local Happenings



Click [Here](#) to read all about Palmer Ranch.

Click [Here](#) for a Palmer Ranch Community Map.



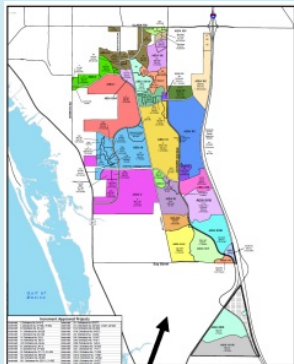
Communication from the Master Association to our Members



Palmer Ranch Flags at Half Staff

On Palmer Ranch, flags will be lowered to half-staff from sunrise to sunset **Saturday, December 7th** in honor of National Pearl Harbor Remembrance Day. Annually, this day commemorates the attack on Pearl Harbor, in Hawaii, during World War II. Pearl Harbor Remembrance Day is not a federal holiday, however, flags are flown at half-staff, so that

Americans never forget this day that lives “in infamy.”



[Click to view Enlarged Image](#)

Master Development Order (MDO)

The development area of Palmer Ranch is defined by the Master Development Order (MDO) with Sarasota County. This instrument allows up to 14,200 residential building units as well as other units such as Commercial-Industrial within the development area.

Parcels of land within the MDO become part of the Master Association when an Incremental Development Order (IDO) is approved, thus size of the Master Association is not static. It will continue to grow until all available land within the development area is built out.

To date, 29 Increments have been approved. All development within Palmer Ranch must abide by the strict design guidelines, which Palmer Ranch is known for. Additionally, regardless if new development is residential, commercial or recreational, assessments will be paid to the Master Association, which provides additional funds for enhancements and maintenance of Palmer Ranch.

Winter Annuals

A seasonal tradition on Palmer Ranch is the changing of the annuals. Winter brings forth striking beds of Geraniums. Soils have been modified at each of the Palmer Ranch entrances in preparation for the installation of the winter plantings. The design features full beds of Red Patriot Geraniums. Planting the annuals in early December allows the plants to “harden in” before the colder weather arrives.



The Patriot Geranium features lightly scented crimson flowers which mature to about 24-30” tall and spread anywhere from one to two feet. They prefer moist but well-drained soil. We trim back, or pinch off, the old blooms which prompts the plant to send out new blooms which is why the Geraniums look beautiful all the way to our spring planting!

Post-Hurricane Debris Removal Continues

Sarasota County's debris contractors resumed their services on Monday, December 2nd. Contractors will be making one pass for storm debris collection. These areas will be evaluated for any extenuating circumstances that may require additional cleanup efforts.

Restricted private roads that have a lock, gate or guard need to complete a Right-of-Entry (ROE) form for debris collection. A community is considered "gated" even if gates stay open during the day. All other unrestricted private roads (without a lock, gate, or guard) do not require an ROE form. Information on the ROE forms was emailed to all Palmer Ranch Community Representatives and Management Companies on October 18th.

You can track the status of the debris collection by clicking on this link: [Debris Pickup Status Zone App](#)



Holiday Hours for the Master Association

The Master Association office will be closed on:

- **Tuesday, December 24th** and **Wednesday, December 25th**, reopening at 8am on Thursday, December 26th and
- **Tuesday, December 31st** and **Wednesday, January 1st**, reopening at 8am on Thursday, January 2nd.

Happy Holidays from all of us at Palmer Ranch!
Our very best wishes for a wonderful 2025.

Sue's Grounds Corner

Stormwater Ponds

Stormwater ponds have a very specific purpose - that has nothing to do with aesthetics - despite what you may have been told. There are most likely several of these ponds in your neighborhood designed to collect rainwater from roads, driveways and roofs. The ponds also serve to prevent flooding and remove pollutants from the water before it drains downstream. All your ponds are connected by underground piping, and they all drain stormwater from one pond to another before reaching Little Sarasota Bay.

You may have noticed ponds in your community look different than the natural lakes we are all familiar with. Given ponds are designed to move water from one point to another, you'll have seen various structures at the water's edge, or even in the middle of a creek. These structures may prevent large debris from entering the underground pipes (catch basin) or it may slow the flow of water (weir). These structures are vital to our overall stormwater system as they control the water both upstream and downstream from your community.



As mentioned above, ponds also remove pollutants, such as fertilizer, pesticides, oils, etc. This function takes place by the design of littoral shelves and/or buffer zones. Littoral shelves are typically found where water enters the pond – it is shallow and has plants that are designed to absorb the pollutants. Buffer zones are found along the water's edge, they're an area between 3' to 10' from the water that isn't mowed, trimmed or treated with chemicals. When rain events occur, water travels through these buffers and is 'cleaned' before it makes its way to the pond.



Throughout this article, I've mentioned the word 'design.' These ponds were designed by engineers who use complicated formulas to identify just how large a pond must be to account for the additional rainwater that results from a development. These ponds are also permitted by several agencies, such as Southwest Florida Water Management District (SWFWMD), Corps of Engineers, Florida Department of Environmental Protection, to name a few.

In the articles below (provided by the Palmer Ranch Watershed & Natural Assets Committee), you'll read more about littoral shelves and buffer zones and all the other ways they help not only our stormwater system, but our environment as well.



What wildlife do our lakes and ponds support?

A lot of wildlife depends on our lakes and ponds, which are actually man-made stormwater ponds designed to prevent flooding and remove pollutants, via littoral shelves, before they enter our groundwater, creeks, estuaries, Bays, and the Gulf. This system mimics the natural Florida landscape, which was mostly wetlands.

We have a ton of opportunity to improve our ponds and increase plant diversity and Florida wildlife. When properly maintained, stormwater ponds can provide great fishing, birding, and wildlife viewing, with:

- Over 35 species of migratory and resident birds, including ducks, roseate spoonbills, anhingas, egrets, osprey, and bald eagles
- Bluegills, largemouth bass, and other gamefish
- Frogs, turtles, non-poisonous snakes, and alligators
- Blue-flag iris, white pond lilies, alligator flag, and over 100 other native aquatic plants

Buffer Zones

One of the best ways to improve wildlife habitat around stormwater ponds is to establish a low-maintenance zone, or buffer zone, along their shorelines. A buffer will also help stabilize the shoreline, preventing erosion and improving water quality.



Does your nearest stormwater pond provide ideal habitat for wildlife?

You can rate it with our stormwater pond habitat assessment tool. Download it to your tablet or computer at www.tinyurl.com/StormwaterPondAssessment.

For more on properly maintaining stormwater ponds, including aqua scaping plants, visit <https://www.sarasota.wateratlas.usf.edu/upload/documents/LivingontheWatersEdgeFreshwater.pdf>.

Images From Our Palmer Ranch Members



This photo of three eagles was taken by Bill Sullivan near his home along South Creek within the Sandhill Preserve community.

Local Happenings



Legacy Trail Surrey and Pedicab Rides

This beautiful new electric-assist surrey was a gift from Friends of The Legacy Trail to Sarasota County, which operates the surrey and pedicab rides on the trail. Looking for a unique holiday gift? Give the gift of a surrey or pedicab ride on the Legacy Trail. Rides run from January through April. More information and reservations can be made by clicking [here](#). The county is in need of volunteers to drive the surrey. Have some extra time on your hands? Visit the webpage [here](#).



Do you hear what I hear?

You're cordially invited to join the Palmer Ranch Singers for their holiday concert on

Sunday, December 8th at 4 pm, at **St. Andrew United Church of Christ, 6908 Beneva Road,**

Sarasota (Gulf Gate area). Doors open at 3:30 p.m. Artistic Director Jane Hunder and Musical Director Linda Lee Miller have put together a wonderful program for all to enjoy as a festive start to this holiday season.

Tickets are \$15 per person at the door on the day of the concert. Ticket sales, along with group dues and donations, cover music purchases, use of the facility, and a professional director and musicians. The Palmer Ranch Singers are now a 501(c)3; donations are tax deductible and may be sent to Palmer Ranch Singers, PO Box 52013, Sarasota, FL, 34232. Patronage is always welcomed and appreciated.

We sincerely hope you will join the Singers, as they look forward to entertaining you with a delightful program of holiday music. Bring the whole family and your neighbors. Check out our new website - palmerranchsingers.com - for schedules and information about the group.

Happy Holidays from the Palmer Ranch Singers!

	YOU ARE CORDIALLY INVITED
	RIBBON-CUTTING CEREMONY
	POTTER PARK IMPROVEMENTS PROJECT
	WEDNESDAY, DEC. 11 10 A.M.
	8587 Potter Park Drive, Sarasota
	
	

Potter Park Ribbon Cutting Ceremony

Sarasota County Capital Projects, along with Parks, Recreation, and Natural Resources, would like to cordially invite you to attend a ribbon-cutting ceremony on **Wednesday, December 11th at 10 am** at **8587 Potter Park Drive, Sarasota**, for the Potter Park Improvements Project.

Sarasota County staff appreciates the dedication and hard work that everyone has provided on this project and asks that you to forward this invitation to any staff who had a role in making this project a success.

Kindly R.S.V.P. to Shelly Walters at mwalters@scgov.net at your earliest convenience.

All parking will be available on-site.

This event will also be streamed live on Facebook. Follow Sarasota County Government on social media [@SRQCountyGov](#) to watch and learn more about this and other Sarasota County events!

Artists of Palmer Ranch Monthly Meeting

If you draw, paint, sculpt, or simply have an interest in the visual arts, please join the *Artists of Palmer Ranch* at our next meeting on **Monday, January 6th at 10:30 am at Gulf Gate Library, 7112 Curtiss Ave., Sarasota.**



Any Palmer Ranch resident is very welcome. If you like, bring your latest masterpiece! We'd love to see it!

Service Dogs Saving Lives Event

The mission of Service Dogs Saving Lives is to educate and provide service dogs to veterans, first responders, and others with prior self-harming tendencies. Please join this team for their second annual **A Night of Hope** event taking place on **Saturday, January 25th from 5:30-10:00 pm** at **Stoneybrook Golf and Country Club**. Stoneybrook is located at **8801 Stoneybrook Blvd., Sarasota.**

In 2023, thanks to the generosity of our donors, Service Dogs Saving Lives gave two scholarships and two service dogs away. One to a first responder and one to a veteran.

Register at SDSLHope.org or scan the QR code on the flyer.

Palmer Ranch Master Association Hours of Operation

Monday - Thursday: 8:00 am - 5:00 pm
Friday: 8:00 am - 4:30 pm

Would you like to submit an article for consideration in a future newsletter? Click [Here](#) for our article submission guidelines and form.

Email completed form to:
Info@palmerranch.net



Palmer Ranch Master Association Mission Statement
Our mission is to enhance and maintain the aesthetic quality of Palmer Ranch and to preserve the overall unique identity and sense of community.